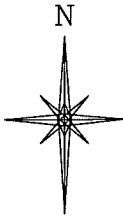


**SUBDIVISION PLAN OF PART OF
LOT C SEC. 3 TP. 23 O.D.Y.D. PLAN EPP33993
'SEE PLAN A5 TO LIMITED ACCESS'**

sheet 2 of 2 sheets
PLAN EPP66986

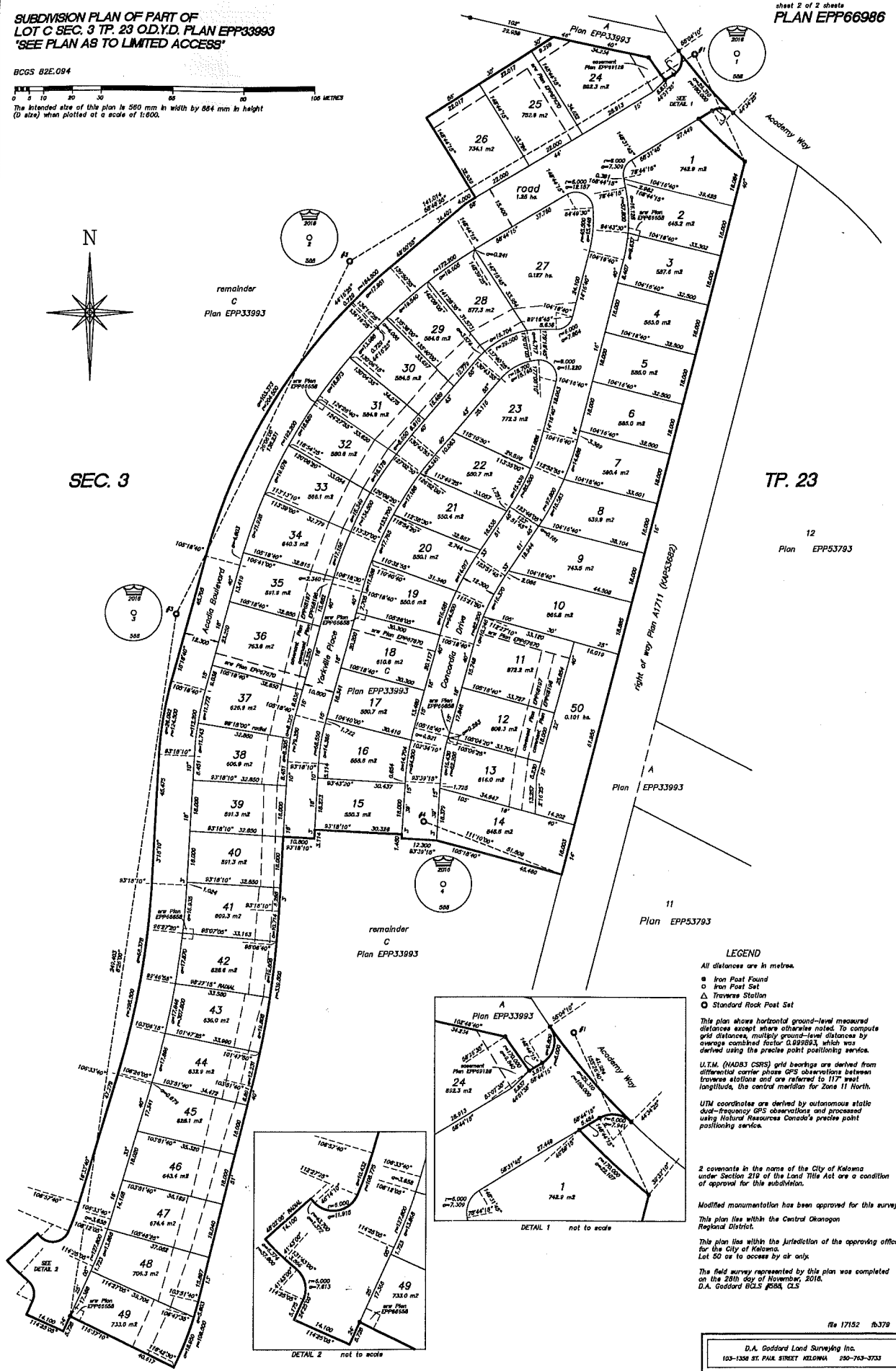
BCGS 82E.094

The intended size of this plan is 560 mm in width by 884 mm in height
(0 size) when plotted at a scale of 1:600.



SEC. 3

TP. 23



LEGEND

All distances are in metres.

- Iron Post Found
- Iron Post Set
- △ Traverse Station
- Standard Rock Post Set

This plan shows horizontal ground-level measured distances except where otherwise noted. To compute grid distances, multiply ground-level distances by average combined factor 0.9999523, which was derived using the precise point positioning service.

U.T.M. (NAD83 CSRS) grid bearings are derived from differential carrier phase GPS observations between traverse stations and are referred to 117° west longitude, the central meridian for Zone 11 North.

UTM coordinates are derived by autonomous static dual-frequency GPS observations and processed using Natural Resources Canada's precise point positioning service.

2 covenants in the name of the City of Kelowna under Section 219 of the Land Title Act are a condition of approval for this subdivision.

Modified monumentation has been approved for this survey.

This plan lies within the Central Okanagan Regional District.

This plan lies within the jurisdiction of the approving officer for the City of Kelowna.

The field survey represented by this plan was completed on the 28th day of November, 2016.
D.A. Goddard B.C.S. #584, C.L.S.

Re 17152 16379

D.A. Goddard Land Surveying Inc.
103-1330 ST. PAUL STREET KELLOWNA 250-763-3733

